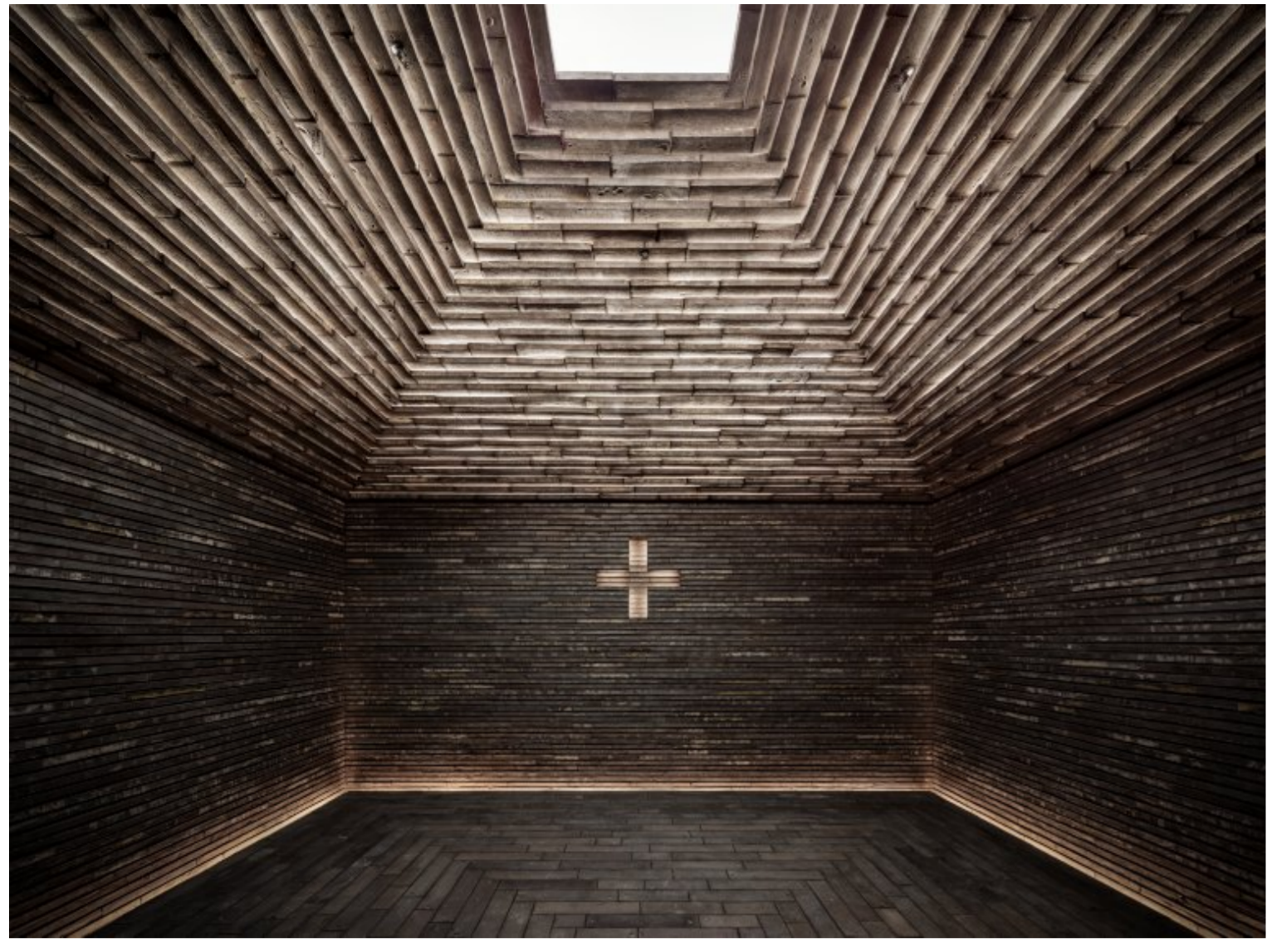


Room of Silence



A space made of bricks and light

The architectural space is deliberately reduced to the elements of bricks and light and creates an environment in which inner contemplation and silence is possible. The walls and floor as well as the stepped vaulted ceilings are made of fired bricks, whose archaic appearance refers to the beginnings of human culture and to the local building tradition in Berlin/Brandenburg.

The vaulted ceiling include open horizontal joints through which light from above enters the room. This creates the impression of a floating "light vault" made of bricks. The archaic materiality and the precise geometric shape of the room create a powerful expression of high poetic intensity that appeals to both the mind and the soul.

The design aims visual stillness in order to enhance the meditative character of the space. Visual stillness is linked to the avoidance of superfluous, perceptible light sources, such as the depiction of light cones on the surface of the room. For this reason, the light is carefully guided using concealed lights that do not result in the depiction of light cones. The joints of the vaults are backlit with fluorescent lamps. The basic lighting is created only by the reflection of the surfaces in the room and the light diffusely reflected from the bricks. This creates a transcendent, dematerialized effect.

„Take note of the fine,
incessantly noise.
It is silence.

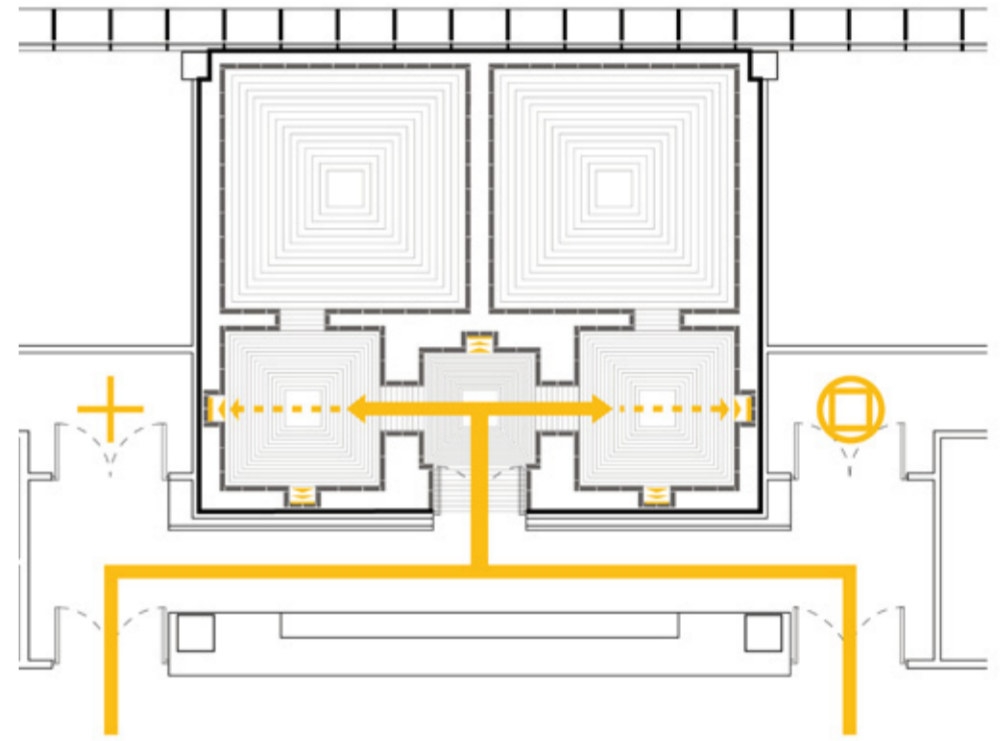
Listen to what you hear,
when you hear nothing at all."

Paul Valery (1871-1945)



Sequence of Rooms

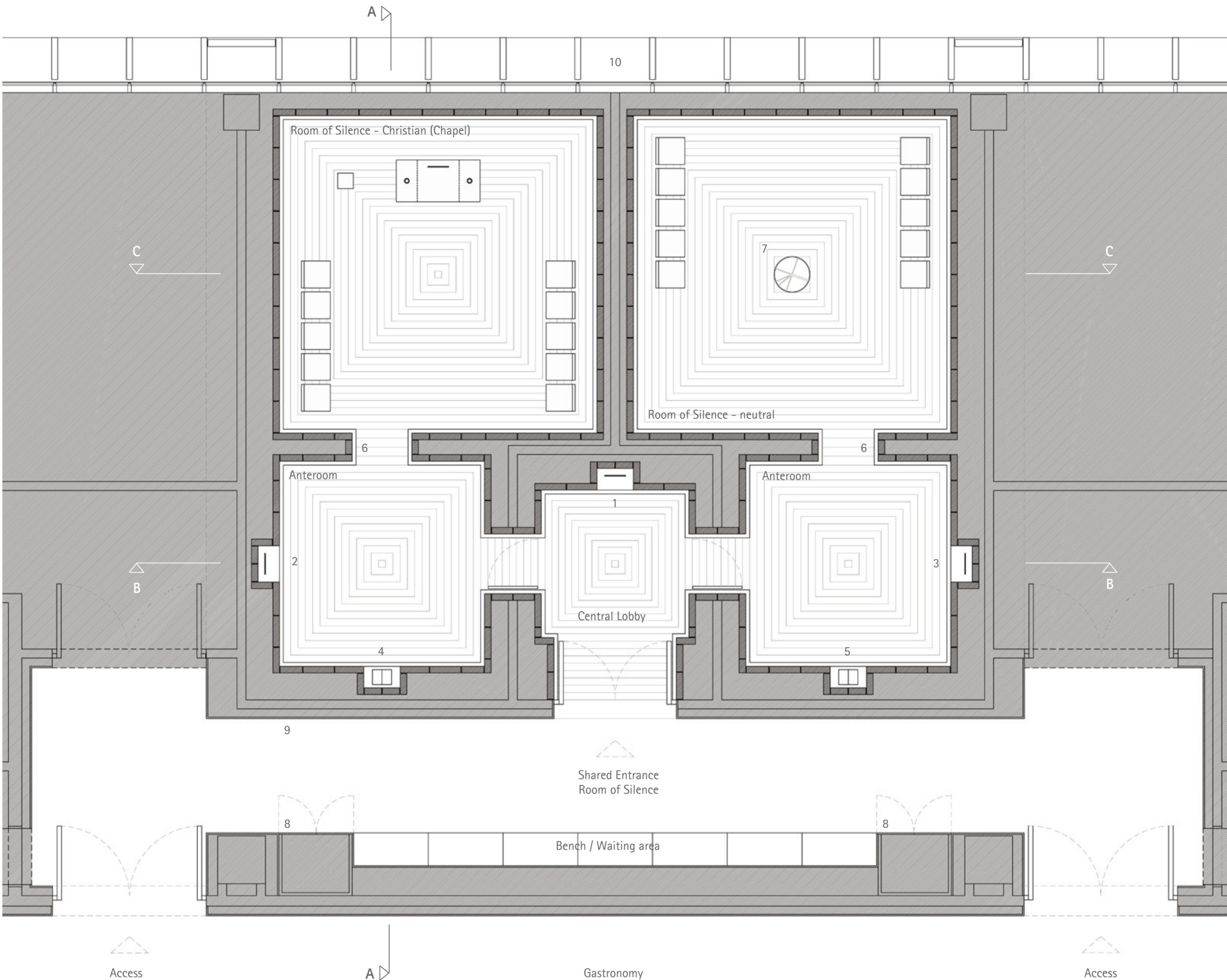
- Legend:
- 1 Central Lobby
 - 2.1 Anteroom - Christian
 - 2.2 Anteroom - neutral
 - 3.1 Room of Silence - Christian (chapel)
 - 3.2 Room of Silence - neutral



Orientation / Symbols / Christian and neutral references

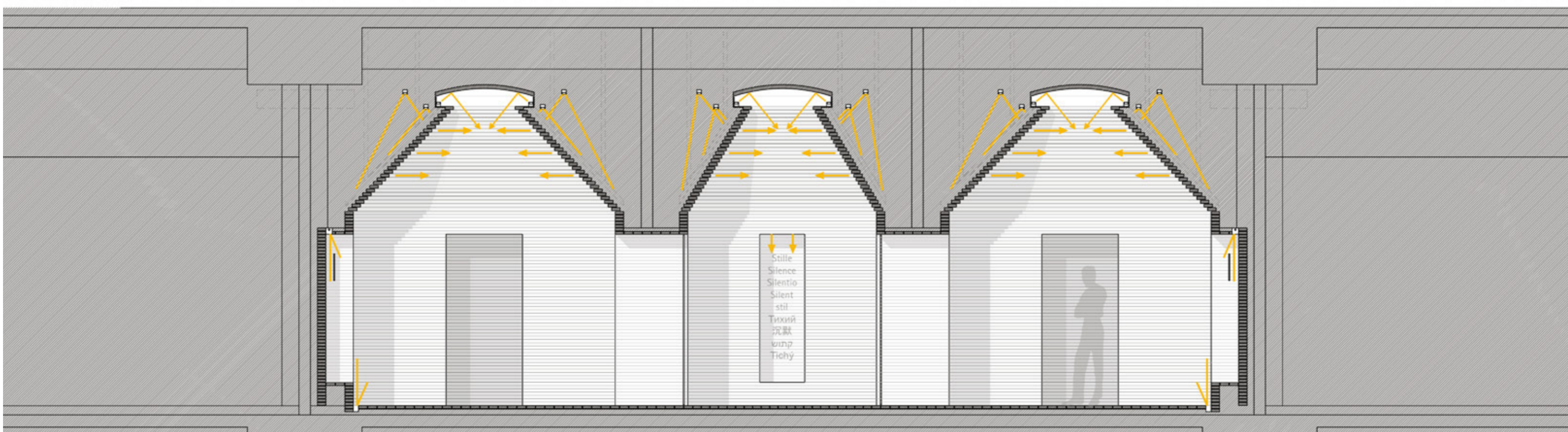
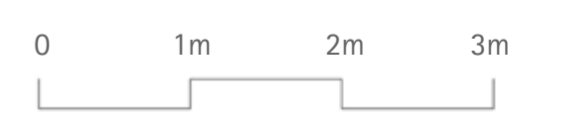


Section AA M1:50
 Room of Silence Christian (chapel) Anteroom Christian Wall recess for prayer book Waiting area Gastronomy



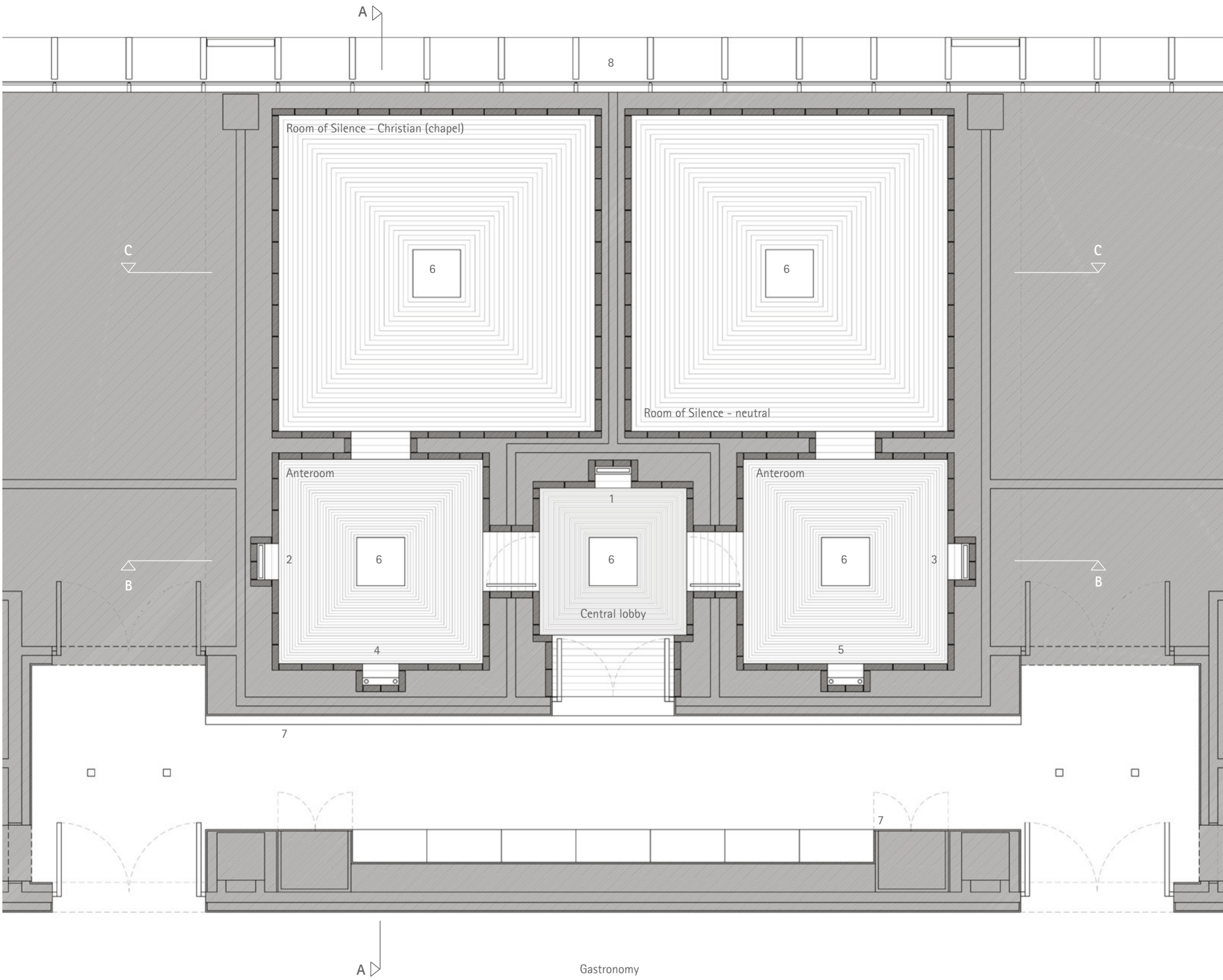
Flooring-Plan M1:50

- | | | | | | | | |
|---|---|---|-------------------------------------|---|---|----|--------------------------------------|
| 1 | Wall recess with lettering „Silence“ | 4 | Wall recess for prayer book | 7 | Bronze floor feature with cardinal direction to Mecca / Jerusalem | 10 | Translucent facade with backlighting |
| 2 | Wall recess with cross symbol (Christian) | 5 | Wall recess for guest book | 8 | Cupboard / Storage / Utility | | |
| 3 | Wall recess with world symbol (neutral) | 6 | Light recess with indirect lighting | 9 | Wall cladding, walnut paneling | | |



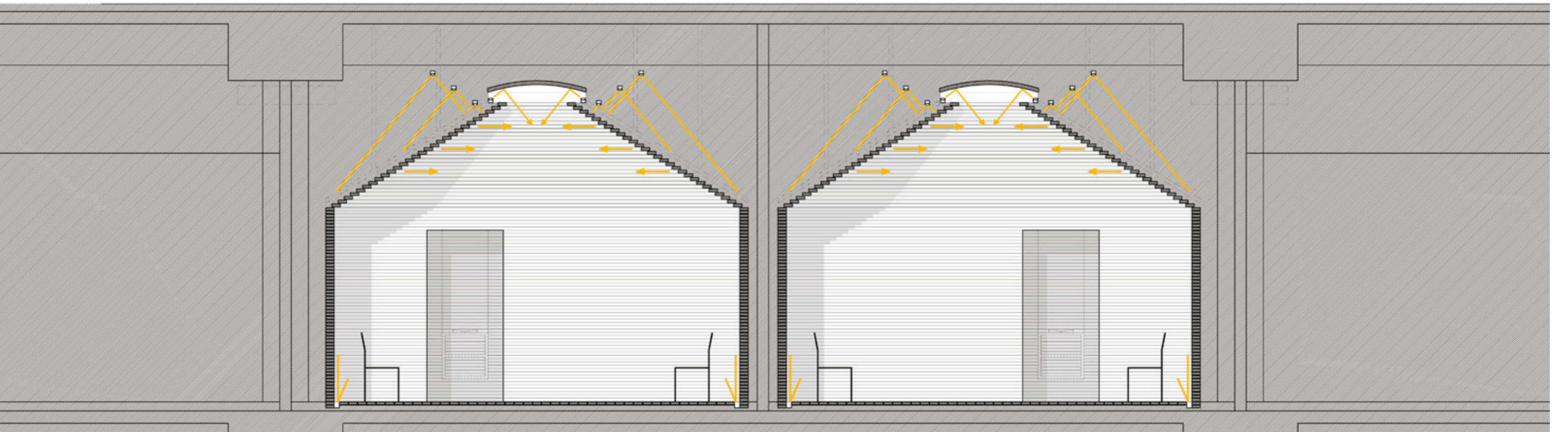
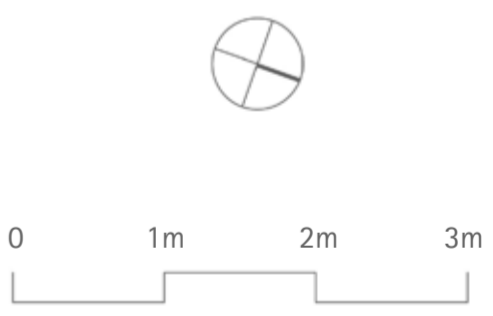
Section BB M1:50

- | | | | | | | |
|-------------------------------|--------------------|------------|--|------------|------------------|-------------------------------|
| Wall recess with cross symbol | Anteroom Christian | Glass door | Central Lobby with "Silence" lettering | Glass door | Anteroom neutral | Wall recess with world symbol |
|-------------------------------|--------------------|------------|--|------------|------------------|-------------------------------|



Reflected ceiling plan M1:50

- | | | | | | |
|---|---|---|----------------------------------|---|--------------------------------------|
| 1 | Wall recess with lettering „Silence“ | 4 | Wall recess for prayer book | 7 | Illuminated cornice |
| 2 | Wall recess with cross symbol (Christian) | 5 | Wall recess for guest book | 8 | Translucent facade with backlighting |
| 3 | Wall recess with world symbol (neutral) | 6 | Oculus (with illuminated cupola) | | |



Section CC M1:50

Room of Silence neutral

Room of Silence Christian (chapel)