

Feng Yuan Evangelical Covenant Church

JYCArchitects+DCDAAssociates

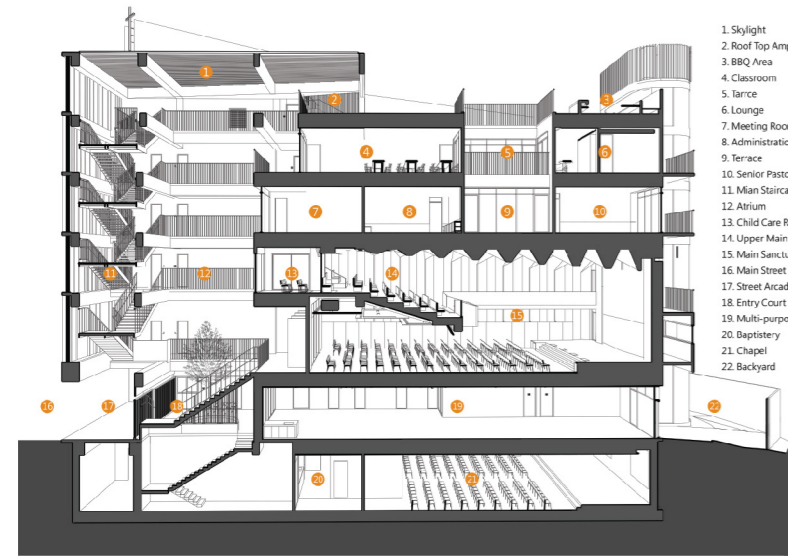
Design/ Completion: 2016/ 2019

Location: Taichung ,Taiwan

Client: Feng Yuan Evangelical Covenant Church

Total Floor Area: 2250 m²

Photography: TCJ SPACE PHOTO



The less than 14 meters in width and more than 40 meters in depth site is an urban shophouse typology. In order to gain the maximum space possible for the main sanctuary, the service spaces such as elevator core, stairs and toilets are placed at the front section of the site leaving the whole rear section for the auditorium with an atrium in between these two sections. The main staircase above the arcade and alongside the front elevation has floor to floor height glazing screened by metal panels hoping that the movement up and down the building would create a new relationship to the street as well as adding a new look to the community.

There are five stories above ground and one below grade. The spaces are as follows: The basement houses the chapel mainly for Sunday school, the ground level is a multi-purpose area for community activities, the second and third levels are the main volume for the sanctuary, the fourth level is for the classrooms and the fifth a library and office spaces. Upon entering the main gate, the front court will receive the visitors and church members with stairs up to the second-floor main sanctuary and down to the chapel in the basement. All circulation and social meeting needs are happening around the front atrium area leaving the places of worship, learning and work be kept away from interference and interruption.

