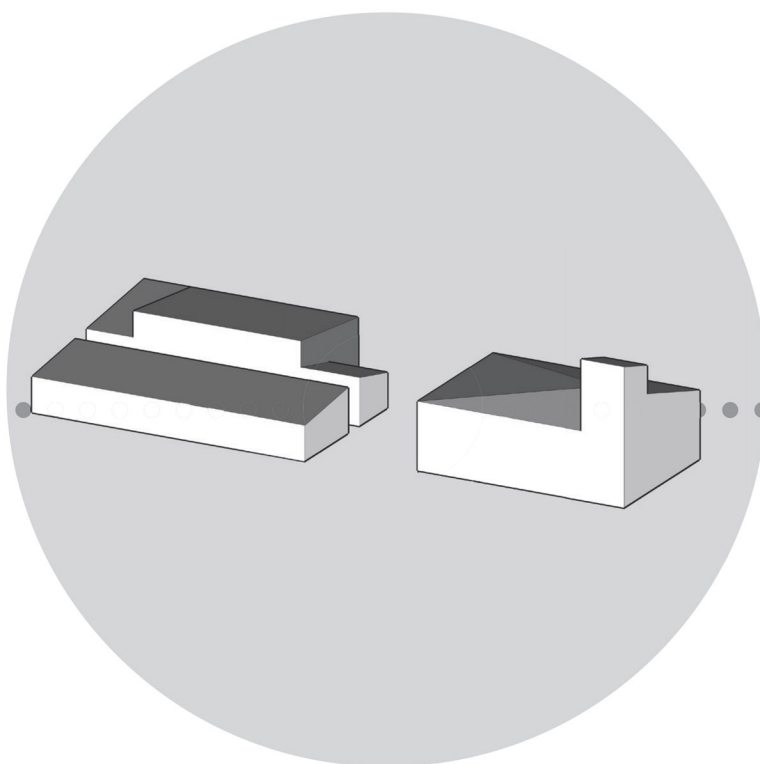
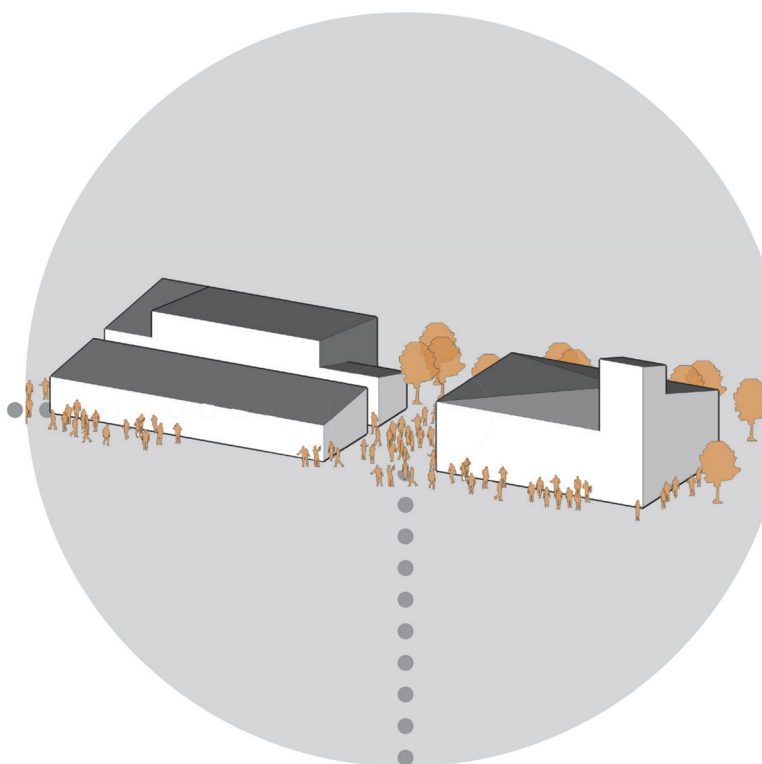


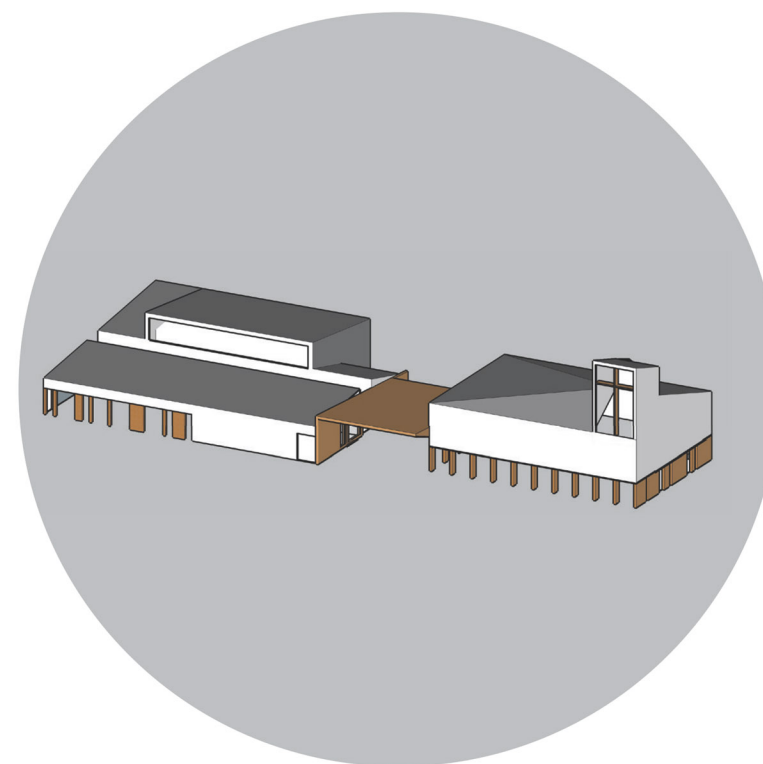
Closed form of the existing worship hall, with a spire in its traditional location and community side block (with a higher form of the sports hall) has been identified.



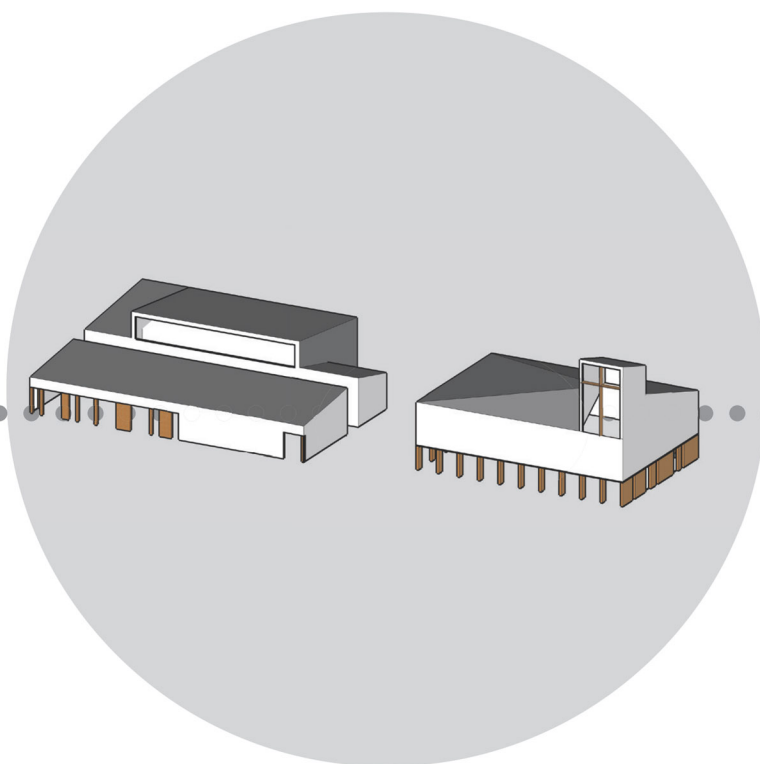
The closed form was then revealed, so the opened content could share in an invitation and interaction with outside environment.



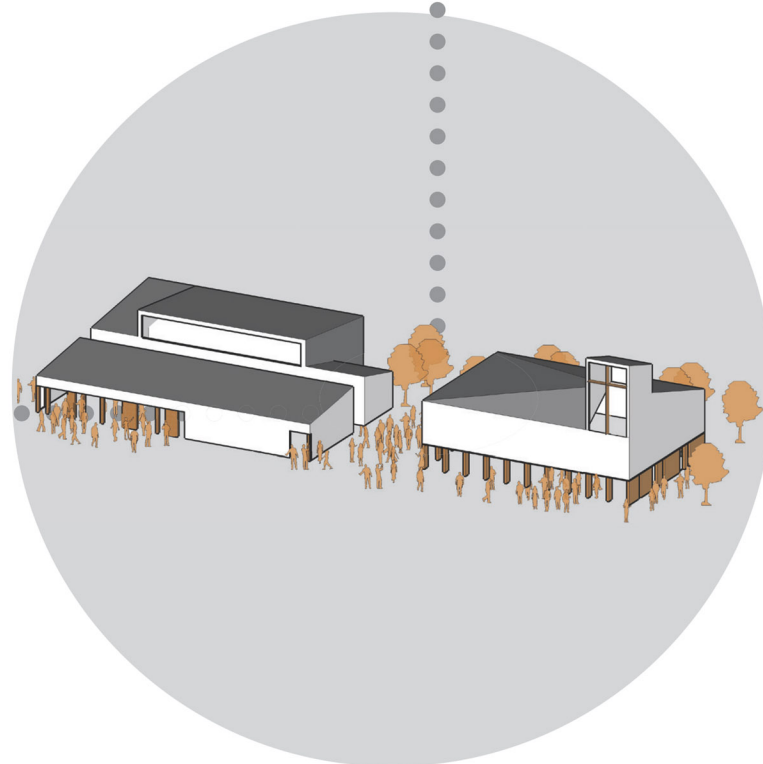
The uncovered form is then interlaced with the users of the space and surrounding environment.



This element interacts with the form, adding detail where it is mostly required – at the human scale of perception



The forms created by those three elements require a connection...



...Which is formed purely out of natural element. Its contrasting form at the same time connects and separates the building.