

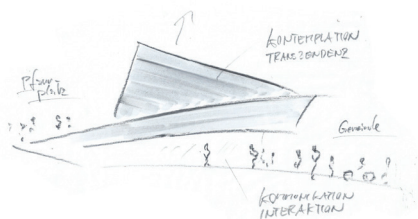
RIF - a self-formed sustainable church

p 1/3

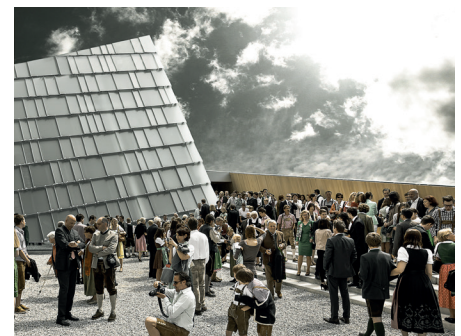
Development of a common Vision based on the existing Boundary Conditions → **DIALOG** → Self-formed integrative Result



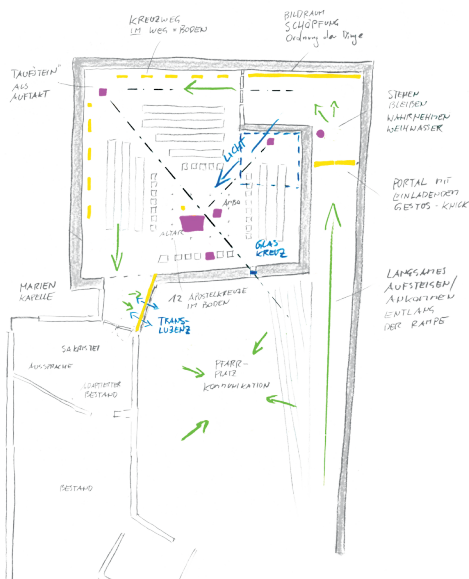
Respecting the local Topography and Integration of the existing parish community building



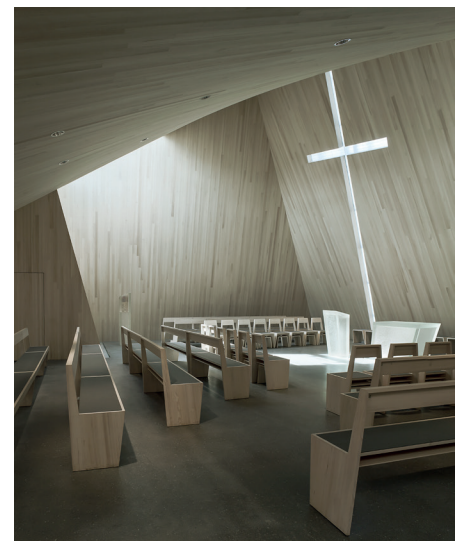
Common vision of one urban sculpture hosting a church as well as a municipal center below
Sketch: Walter Klasz



clearly separated forecourts



Common development of the liturgical concept integrating contemporary art and the daylight concept
Sketch: Walter Klasz



the interior emerged out of the liturgical concept responding to the spatial form base on sustainable issues (orientation of the two main surfaces to the sun)

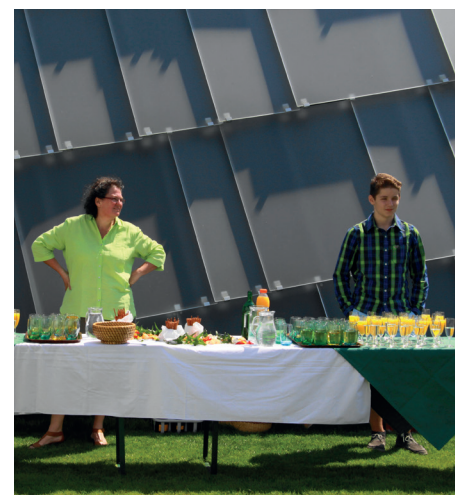
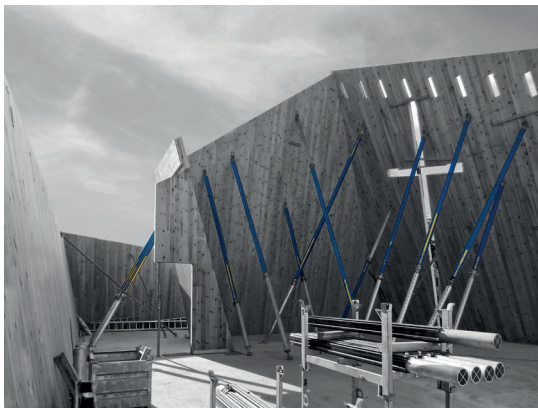
Architekt
Walter Klasz

Office:
6184 St. Sigmund Nr.12
Walter@Klasz.at
+43 699 16766654
www.klasz.at
legul successor of www.klaszkleebberger.com
STN: 071/7603
Teaching and Research
at the University of Innsbruck

RIF - a self-formed sustainable church

p 2/3

LOCAL RESOURCES + INTELLIGENT CONSTRUCTIONS USING CONTEMPORARY TECHNOLOGY → **SELF-SUFFICIENT BUILDING**



Architekt
Walter Klasz

Office:
6184 St. Sigmund Nr.12
Walter@Klasz.at
+43 699 1676654
www.klasz.at
legul successor of www.klaszkleebberger.com
STN: 071/7603
Teaching and Research
at the University of Innsbruck

RIF - a self-formed sustainable church

p 3/3

SELF-FORMED DEVELOPMENT



high IDENTIFIATION

